



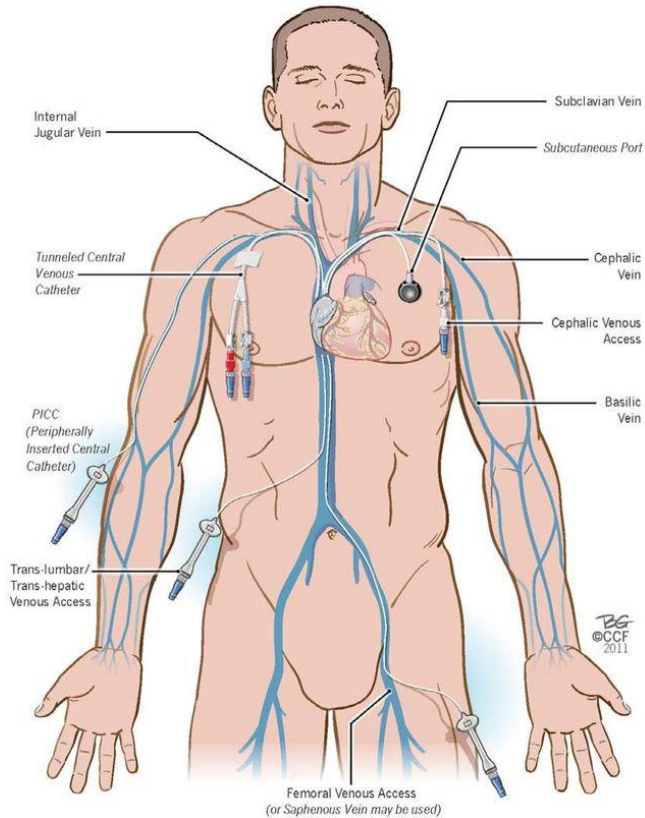
Developing a CVAD Registry

Nicole Gavin, Nicole Marsh, Emily Larsen, Sarah Northfield,
Raymond Chan, Gillian Nasato & Kerrie Curtis

Cancer Care Services
Royal Brisbane & Women's Hospital

14 May 2016

CVADs & failure



Mechanical

- Blockage
- Dislodgement
- Vein thrombosis
- CVAD rupture

Infective

- Local infections
- Catheter-related blood stream infections (CRBSI)
- Central line-associated bloodstream infections (CLABSI)
- Catheter-related infections (CRI)

The CVAD Registry

1. Device and patient information, such as details about the device insertion, any patient allergies and sensitivities to dressings and solutions, infusates administered through the device and the reason for removal.
2. An account of any adverse events, any mechanical and infective complications, including anti-microbial resistance, that occur and their risk factors.
3. An accurate report of catheter-related bloodstream infections, central line associated bloodstream infection (laboratory confirmed bloodstream infection or mucosal barrier injury laboratory confirmed bloodstream infection), catheter-related infection per 1000 -catheter and -patient days (as per the Centers for Disease Control definitions).

Outcomes

1. How many CVAD-days are there in the population?
2. What is the CVAD failure per 1000 –catheter and –patient days?
 1. What are the rates of CRBSI, CLABSI and CRI?
 2. What are the rates of occlusion (partial and complete), catheter-related thrombosis, migration, dislodgement and CVAD rupture?
3. What are the demographics of patients requiring a CVAD?
4. What is the dwell time of CVADs?
5. What is the CVAD utilization ratio?
6. How many CVADs do patients have during their treatment?

Content validity

Definition of CVAD failure:

CVAD failure occurs when the device can no longer be used for treatment, and must be removed and may be replaced with a new device.

Failure can be mechanical (occlusion, dislodgement, vein thrombosis, CVAD rupture) or infective (local infections, catheter-related bloodstream infections, CVAD-associated bloodstream infections or catheter-related infections).

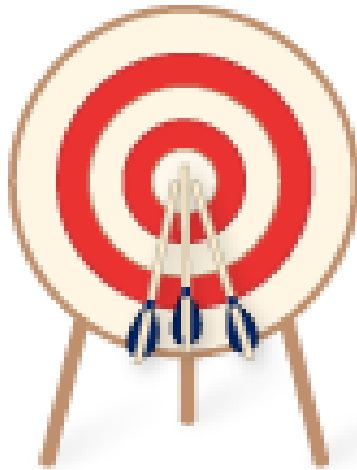
Face validity



Reliability testing



**Reliable but
not valid**

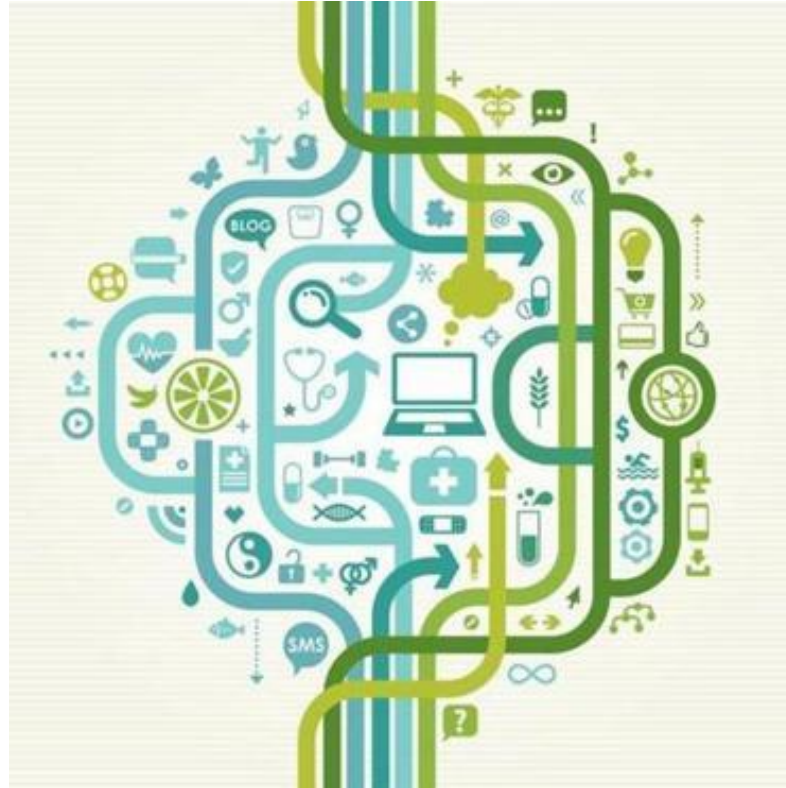


**Reliable
and valid**



**Unreliable and
hence not valid**

Minimum data set



So far, ...

